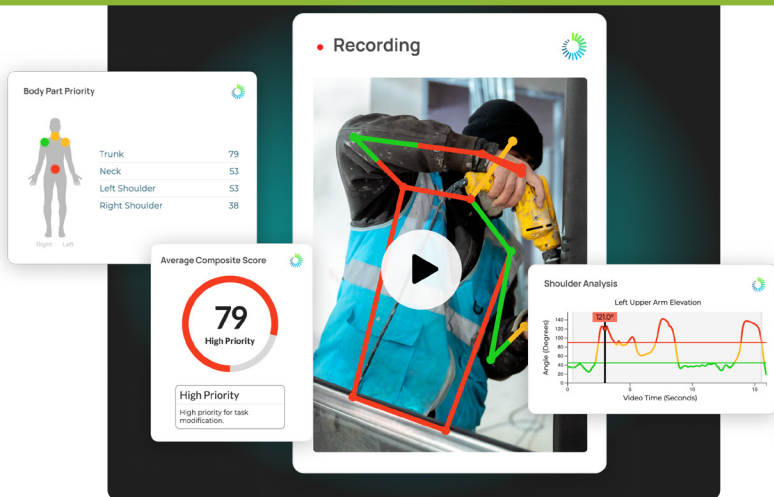


AI-Powered Ergonomics for Workplace Safety



RISK CONTROL



Revolutionize workplace safety with an AI ergonomics solution designed to prevent injuries and boost productivity.

Empower your workforce with INSEER technology to proactively detect and reduce risk factors before injury onset. An intuitive, cloud-based platform, this software harnesses real-time intelligence to help your safety team avoid ergonomic vulnerabilities across your working environment.

THE VALUE BEHIND INSEER AI:

Smart Ergonomic Analysis

Reduce ergonomic assessment time and elevate workplace efficiency with an integrated blend of guided smart wizards and visual AI.

Notable features:

- Color-coded skeleton risk overlay (Red(high), Yellow(med), Green(low))
- Composite priority score
- Waveform display of joint angle movements in real-time
- A growing list of automated Ergonomics Assessment Tools

Comparative Assessments

Demonstrate the value of coaching and validate workstation upgrades without having to invest capital spending upfront.

Key Benefits:

- Employee movement training, proper posture techniques
- Full work cycle capturing
- Clear, actionable outputs for coaching

Strategic Safety Dashboard

Consolidate your ergonomics data into a centralized analytics dashboard for a focused safety analysis.

Key features:

- Fast-acting incident response support tools
- Customizable organizational hierarchy
- Export data into CSV, PDF, and shareable URL links for reporting
- Identifiers of high-priority facilities, tasks, and job titles

KEY ADVANTAGES:

- No wearables necessary.
- Real-time **3D-motion capture** technology.
- Compatible with **any device equipped with a camera**.
- Sophisticated, **secure cloud-based software**, user-friendly interface with minimal learning curve.



LEARN MORE ABOUT INSEER™

CONNECT WITH US.

Contact Safety National's Risk Control Department at 888-995-5300 or Risk-Control@safetynational.com.